

# Champion® STRONG-ARM



## 5 TONNE FORKLIFT/TRACTOR JACK

MODEL NO: CFT5B

PART NO: 7624007

### OPERATION & MAINTENANCE INSTRUCTIONS



GC0619 - ISS2

## INTRODUCTION

Thank you for purchasing this CLARKE jack.

Before attempting to use this product, please read this manual thoroughly and follow the instructions carefully. In doing so you will ensure the safety of yourself and that of others around you, and you can look forward to your purchase giving you long and satisfactory service.

## GUARANTEE

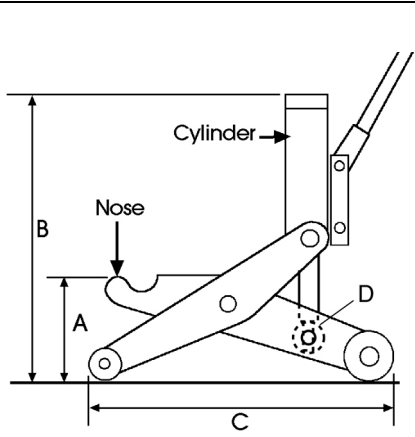
This product is guaranteed against faulty manufacture for a period of 12 months from the date of purchase. Please keep your receipt which will be required as proof of purchase.

This guarantee is invalid if the product is found to have been abused or tampered with in any way, or not used for the purpose for which it was intended.

Faulty goods should be returned to their place of purchase, no product can be returned to us without prior permission.

This guarantee does not effect your statutory rights.

## TECHNICAL SPECIFICATIONS

Working Height A	Min 70 mm Max 430 mm	
Maximum Load A	4 tonne	
Working Height B	Min 410 mm Max 730 mm	
Maximum Load B	5 tonne	
Overall Length (C Max)	670 mm	
Weight	45 kg	

---

# SAFETY PRECAUTIONS

---



**WARNING: THE OPERATOR MUST FOLLOW ALL INSTRUCTIONS WITHIN THIS INSTRUCTION MANUAL AND NOT OPERATE THE JACK UNTIL HAVING DONE SO.**

---

## THE JACK

1. The jack must be maintained and repaired in accordance with the these instructions. Such maintenance and repair must be carried out by qualified persons.
2. Ensure that the jack is in good working order. Have any damaged parts repaired or replaced immediately. Use genuine Clarke parts only. The use of unauthorised parts may be dangerous and will invalidate the guarantee.
3. Do not exceed the rated capacity of the jack (4 tonne-scissor/5 tonne cylinder).
4. Never tamper with the jack or modify it in any way, as this could prove to be dangerous and will invalidate the guarantee. Only use the product for the purpose for which it is intended.
5. Do not use the jack if an oil leak is apparent. Consult your Clarke dealer.
6. Check the condition of the labels regularly and replace as required.

## WORKPLACE

1. Use the jack in a suitable, well lit work area.
2. Keep the work area clean and tidy and free from unrelated items.
3. Keep all non-essential persons at a safe distance whilst the jack is in use.
4. Use the jack on level and solid ground, preferably concrete. Avoid soft/ unmade ground as the jack may sink in.
5. Use appropriate safety equipment, such as protective footwear, when using this jack.

## OPERATION

1. Ensure the vehicle is securely supported.
2. Ensure there are no personnel or obstructions under the vehicle before lowering.
3. Ensure when lifting, that the jack and all parts of the load can be clearly seen. Always watch the jack and the load during operation.

4. Never climb on, or attempt to ride on the jack.
5. Take care not to trap fingers in the moving parts of the jack.
6. Ensure that you can see the contact and jacking point throughout the jacking operation in case there is any relative movement.
7. This jack is for lifting only, do not move a load using the jack as a dolly.
8. Make sure the load is taken by the full surface of the cylinder or nose, and that the point of lift on the load is strong enough to support the load adequately.
9. Consult the vehicle handbook to determine the correct lifting points.
10. Do not work under the raised vehicle until it is supported by suitable means e.g. axle stands, NEVER rely on the jack to support the vehicle by itself.
11. Never push a load off the jack.

## **LIFTING OPERATIONS AND LIFTING EQUIPMENT REGULATIONS 1998**

This jack, depending on use, may fall within the scope of LOLER. It is the owner's responsibility to determine whether or not it does, and if so, to comply with any applicable requirements. It may be necessary to have the jack regularly inspected.

## **ENVIRONMENTAL PROTECTION**

1. Take care to ensure that any spilt hydraulic oil is cleaned away using sand, or treated with absorbent granules designed for the purpose.
2. Always make every effort to contain any spillage and prevent ingress into the local water course.

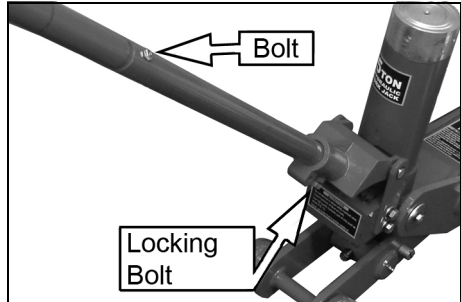
---

## BEFORE USE

---

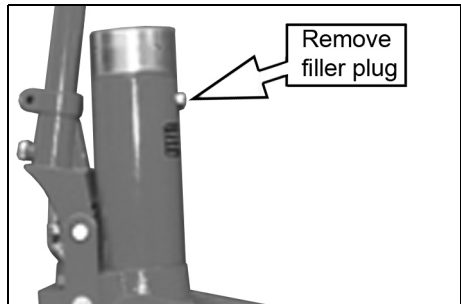
### FIT THE HANDLE

1. Insert the lower handle into the handle socket and tighten the locking bolt shown to secure the handle in position.
2. Add the upper handle section and secure with the bolt shown.



### CHECK THE OIL LEVEL

1. Remove the filler plug and check the oil level.
  - Oil should be up to the edge of the filler hole.
2. Top up if necessary with Clarke hydraulic oil available from your local Clarke dealer (part number 3050830).
  - Oil grade SAE10, capacity 480ml.



### PURGE AIR BUBBLES

During shipment, air bubbles can occur in the hydraulic system which will cause the jack to feel "spongy" and it may not achieve its maximum lift.

1. Pump the operating handle several times to purge any air from the hydraulic system.
2. Twist the handle counterclockwise to open the release valve and lower the jack. Check that the jack descends to its lowest position.
  - The jack is now ready to use.

---

# OPERATION

---

## RAISING A LOAD

---



**WARNING: BEFORE LIFTING, ENSURE THE SAFETY PRECAUTIONS ARE STRICTLY FOLLOWED. NO RESPONSIBILITY CAN BE ACCEPTED FOR INCORRECT USE OF THE JACK.**

**WARNING: PLEASE NOTE THAT THE SCISSOR ACTION OF THE JACK WILL CAUSE THE JACK TO MOVE SLIGHTLY AS IT IS RAISED AND LOWERED. IT IS MOST IMPORTANT THAT THIS MOVEMENT IS NOT RESTRICTED IN ANY WAY. ENSURE THE GROUND IN THE IMMEDIATE VICINITY OF THE JACK IS FREE FROM DEBRIS.**

---

1. Before use, check for any damage or worn parts. **Do not use the jack unless it is perfectly serviceable.**
2. Ensure the load is chocked and stable, and on firm level ground, before manoeuvring the jack so that the grooves in the nose or the top of the cylinder, (whichever is to be used), is directly beneath the lifting point of the load.
3. Twist the handle clockwise to close the release valve.
4. Put the nose directly below the lifting point of the vehicle (see the manufacturers handbook for the best locations).
  - Make sure that there is no obstruction that will prevent a clear lift and that all personnel are in a safe position before you lift the vehicle.
5. Pump the handle to raise the jack until contact is made with the lifting point.
6. Make one final check to ensure that there are no obstructions to lifting and that all personnel are well clear before continuing to pump the handle and lift the load.
7. NEVER allow any individual to get beneath the load until it is firmly chocked or supported on axle stands or similar supports.

## LOWERING THE LOAD

1. With the axle stands/supports removed, check to ensure that there are no personnel in the immediate vicinity before VERY SLOWLY twisting the lifting handle anticlockwise and allowing the jack to lower the load.

**NOTE:** This operation must be done very slowly and in full control. DO NOT let the load lower suddenly, this could damage internal components.

2. Remove the jack from below the vehicle.

**NOTE:** The jack can move slightly during operation. It is important that the area is clean and free from all debris.

---

## MAINTENANCE

---

1. Remove any corrosion and repaint for protection.
2. Check the piston rod periodically for signs of corrosion. Clean exposed areas with a clean oiled cloth.
3. Ensure that labels and warning notices are in place and legible.
4. Inspect for distortion of hinge pins and security of all nuts and bolts.
5. Keep all moving parts lightly lubricated to prevent any possibility of corrosion.
  - A grease nipple is provided for occasional lubrication of the main supporting axle.
6. If an oil leak is seen, check the oil level as described on page 5.
7. In the case of a persistent oil leak which requires the dismantling of the hydraulic parts to correct, the jack should be taken to your Clarke dealer for overhaul.

## STORAGE

Store in a dry place with the ram fully lowered and the release valve closed.

If stored for long periods, inspect at least once a year, clean and re-oil. For servicing, contact your CLARKE dealer, or CLARKE International Service Department.

## TROUBLESHOOTING

PROBLEM	CAUSE	SOLUTION
Jack will not lift the rated load	Low oil level	Top up oil as described on page 5.
	Release valve not closed	Turn the release knob fully clockwise.
	Air bubbles in the hydraulic system	Purge the system as described on page 5.
Jack lowers when under load	Release valve not fully closed	Turn the release knob fully clockwise.
	Air in the hydraulic system	Purge the system as described on page 5.
Pump feels spongy	Low oil level	Top up oil as described on page 5.
	Air in the hydraulic system	Purge the system as described on page 5.
Jack will not lift full height	Low oil level	Top up oil as described on page 5.
	Air in the hydraulic system	Purge the system as described on page 5.
Jack will not lower completely	Control valve may be faulty	Return to your Clarke dealer for repair

If any of these remedies fail to restore your jack, consult your Clarke dealer

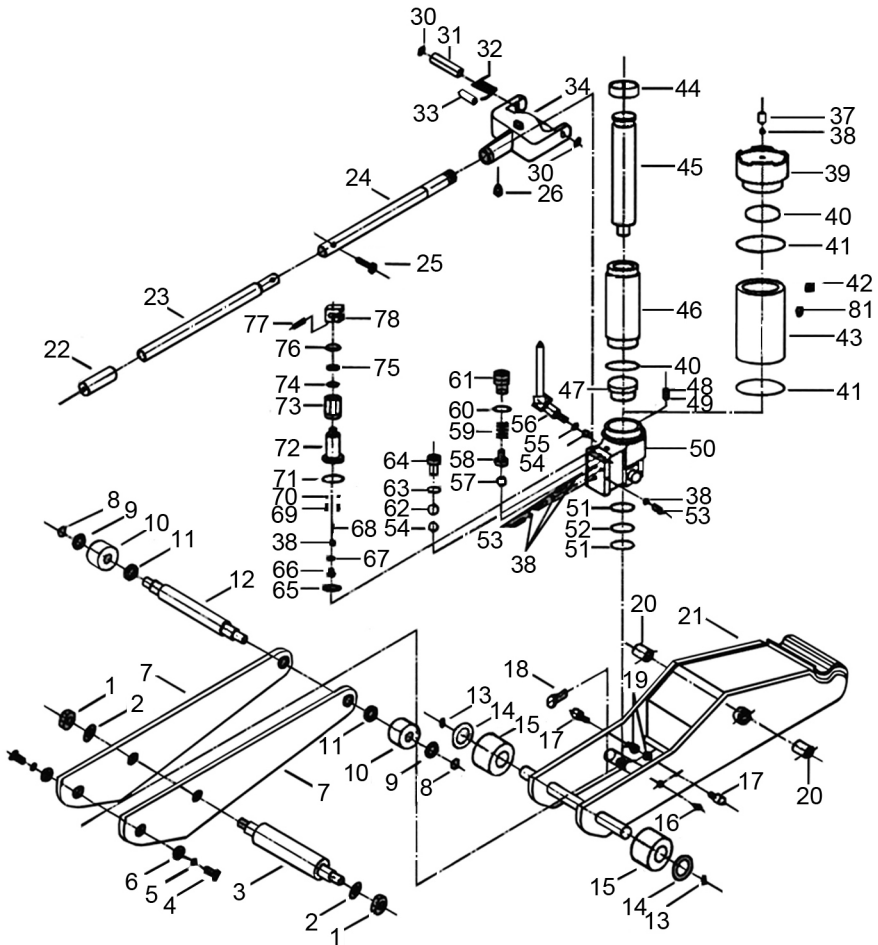


# COMPONENT PARTS

PART NO	DESCRIPTION	PART NO	DESCRIPTION
1	Nut M16	35	Not Used
2	Washer	36	Not Used
3	Main Supporting Axle	37	Set Screw
4	Screw	38	Ball
5	Washer	39	Cylinder Cap
6	Penny Washer	40	O-Ring
7	Side Plate	41	O-Ring
8	Circlip	42	Screw-in Plug
9	Washer	43	Oil Reservoir
10	Front Wheel	44	Bush
11	Nut	45	Ram Piston Rod
12	Front Wheel Axle	46	Ram Cylinder
13	Circlip	47	Spacer
14	Washer	48	Filter
15	Rear Wheel	49	Magnet
16	Grease Nipple	50	Valve Body
17	Stop Screw	51	O-Ring
18	Screw	52	Nylon Washer
19	Nut	53	Screw
20	Spacing Bush	54	Ball
21	Lifting Arm Assembly	55	Square Ring
22	Handle Grip	56	Actuating Rod c/w U/Joint
23	Upper Handle	57	Ball 4mm
24	Lower Handle	58	Ball Seat
25	Bolt	59	Spring
26	Locking Bolt	60	O-Ring
27	Not Used	61	Screw-in Plug
28	Not Used	62	Ball 9mm
29	Not Used	63	O-Ring
30	Circlip	64	Filler Plug
31	Yoke Pivot Pin	65	O-Ring
32	Retaining Spring	66	Screw
33	Guide Block Pin	67	O-Ring
34	Yoke	68	Spring

PART NO	DESCRIPTION
69	Spring
70	Ball 3mm
71	O-Ring
72	Plunger
73	Piston
74	O-Ring

PART NO	DESCRIPTION
75	Back-up Ring
76	Wiper Ring
77	Pin
78	Not used
80	Not used
81	Plug Seal



# DECLARATION OF CONFORMITY



**Clarke**<sup>®</sup>  
**INTERNATIONAL**

Hemndall Street, Epping, Essex CM16 4LG

## DECLARATION OF CONFORMITY

**This is an important document and should be retained.**

**We hereby declare that this product(s) complies with the following directive(s):**

*2006/42/EC Machinery Directive.*

**The following standards have been applied to the product(s):**

*BS EN1494:2008*

The technical documentation required to demonstrate that the product(s) meet(s) the requirement(s) of the aforementioned directive(s) has been compiled and is available for inspection by the relevant enforcement authorities.

The CE mark was first applied in: 2015

**Product Description:** Forklift Jack  
**Model number(s):** CFT5B  
**Serial / batch Number:** N/A  
**Date of Issue:** 13/06/2016

**Signed:**

**J.A. Clarke**  
**Director**

# A SELECTION FROM THE VAST RANGE OF

# Clarke®

## QUALITY PRODUCTS

### AIR COMPRESSORS

From DIY to industrial, Plus air tools, spray guns and accessories.

### GENERATORS

Prime duty or emergency standby for business, home and leisure.

### POWER WASHERS

Hot and cold, electric and engine driven - we have what you need

### WELDERS

Mig, Arc, Tig and Spot. From DIY to auto/industrial.

### METALWORKING

Drills, grinders and saws for DIY and professional use.

### WOODWORKING

Saws, sanders, lathes, mortisers and dust extraction.

### HYDRAULICS

Cranes, body repair kits, transmission jacks for all types of workshop use.

### WATER PUMPS

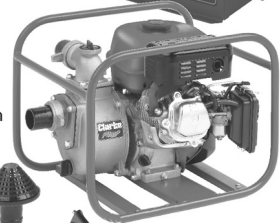
Submersible, electric and engine driven for DIY, agriculture and industry.

### POWERTOOLS

Angle grinders, cordless drill sets, saws and sanders.

### STARTERS/CHARGERS

All sizes for car and commercial use.



**PARTS & SERVICE: 0208 988 7400**

**E-mail: [Parts@clarkeinternational.com](mailto:Parts@clarkeinternational.com) or [Service@clarkeinternational.com](mailto:Service@clarkeinternational.com)**

**SALES: UK 01992 565333 or Export 00 44 (0)1992 565335**

**Clarke® INTERNATIONAL** Hemnall Street, Epping, Essex CM16 4LG  
[www.clarkeinternational.com](http://www.clarkeinternational.com)